



## Monthly Update

*April 2025*

## *Lee and Penny Anderson Arena*

*University of St. Thomas, St. Paul, MN*



## Executive Summary

Ryan Companies with the help of our trade partners worked through the following events within the month of April.

- Horwitz set five of our AHU units. Horwitz continued work on piping and mechanical rough-ins in the Main Arena and Auxiliary Ice Rink.
- Total Mechanical completed the Auxiliary Ice Rink pour and started to install the subfloor cooling piping in preparation for the Main Arena Ice slab pour.
- Gephart continues in-wall electrical rough-ins, devising out and installing light fixtures at all levels of the Main Arena and Auxiliary Ice Rink as well as setting medium and high voltage transformers.
- Gresser is continuing to erect interior CMU walls at the Main Arena and continues exterior stone installations at the north and south elevations of the Main Arena.
- Ryan Self Perform began taking delivery of millwork and lockers. They continue to install doors frames and hardware.
- Metro Manufacturing began installing the main arena stadia rails.
- Viking continues installing overhead sprinkler piping at the Main Arena.
- Custom Drywall continues exterior framing and sheathing of the Main Arena. Also, Custom Drywall continues interior framing and taping at the main arena on event, concourse and club levels.
- Central Roofing continues to work on the installation of clay tile gable roofs.
- Egan continues to install the curtain wall at the athlete entry as well as punched window openings along the west elevation of the main arena. Egan continues to install interior storefront throughout the Arena.
- Swanson Youngdale continues to work through paint finishes at the event, and concourse levels as well as painting locker rooms.
- Acoustic Associates continues setting tile in the athlete locker rooms as well as installing epoxy flooring and installing ACT ceilings.
- Schindler completed the installation of (2) elevators at the main arena (northwest tower) and are moving on to the service elevator.
- H2I completed the installation of the Men's practice basketball court.



## Key Highlights

### UPCOMING EVENTS/MILESTONES

- *Elevator installation continues*
- *Roofing at the gables to continue*
- *Pour Main Arena Ice concrete slab*
- *Exterior building stone complete*
- *Misc metal drink rail installation*
- *Interior finishes to continue*

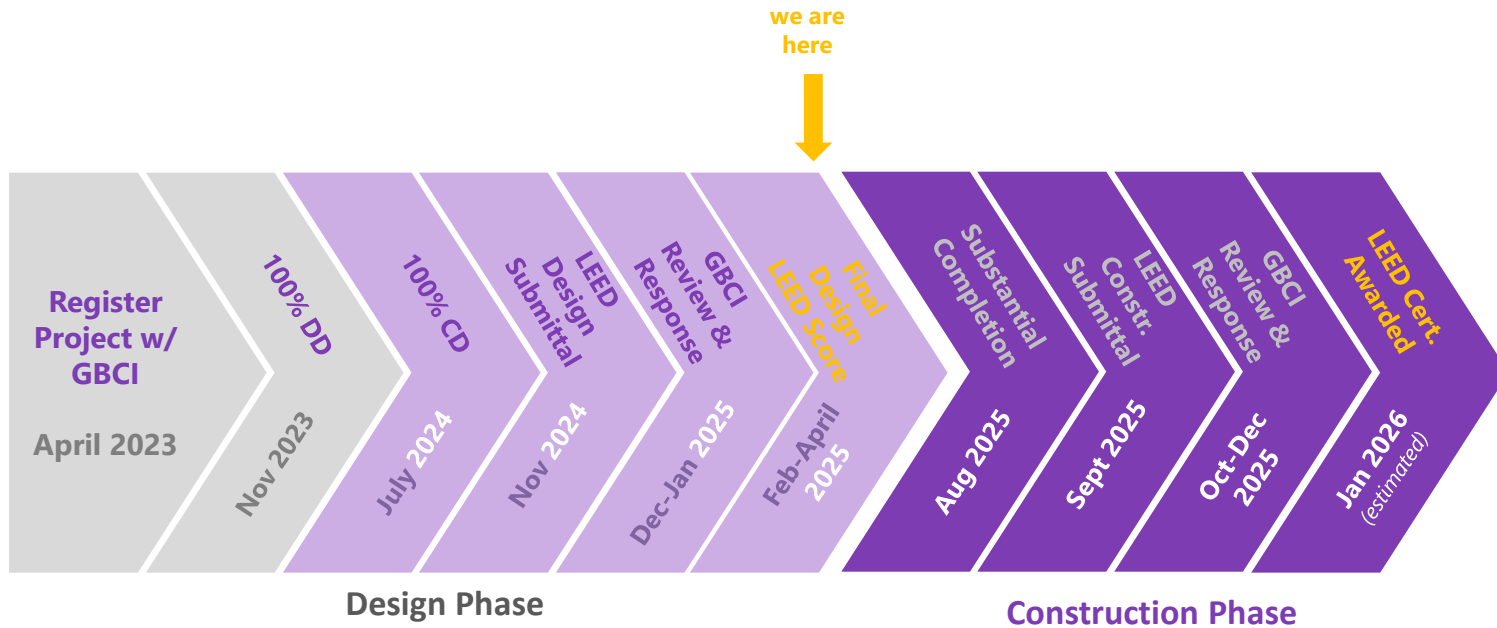


# LEED – Construction Waste Diversion

Month	Waste Hauler	Waste Type	Total Weight (Tons)	Diversion Weight (Tons)	Weight To Landfill (Tons)	Diversion Rate (%)
February	Dem-Con	Mixed	20.96	15.78	5.18	75.3%
March	Dem-Con	Mixed	11.42	8.6	2.82	75.3%
April	Dem-Con	Mixed	9.74	7.33	2.41	75.3%
May	Dem-Con	Mixed	31.24	23.54	7.7	75.4%
June	Dem-Con	Mixed	22.880	17.23	5.65	75.3%
July	Dem-Con	Mixed	103.17	77.69	25.48	75.3%
August	Dem-Con	Mixed	131.05	98.72	32.33	75.3%
August	Dem-Con	Concrete	10,550.73	5,734.48	4,816.25	54.4%
September	Dem-Con	Mixed	75.45	58.22	17.23	77.2%
October	Dem-Con	Mixed	99.92	74.88	25.04	74.90%
November	Dem-Con	Mixed	80.25	59.14	21.11	73.7%
December	Dem-Con	Mixed	95.22	71.62	23.6	75.2%
January	Dem-Con	Mixed	129.76	99.50	30.26	76.7%
February	Dem-Con	Mixed	141.76	106.77	34.99	75.3%
March	Dem-Con	Mixed	187.51	143.40	44.11	76.5%
		<b>Grand Total</b>	<b>11,691.06</b>	<b>6,596.90</b>	<b>5094.16</b>	<b>56.4%</b>



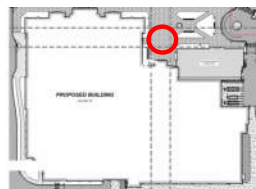
# Sustainability – Timeline



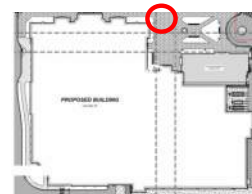




Student Entry Exterior Elevation Sheathing Installation In Preparation for Metal Panels

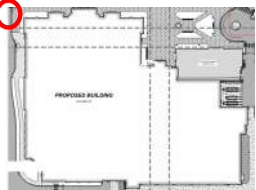


Main Arena North Exterior Elevation Stone and Glazing Installation

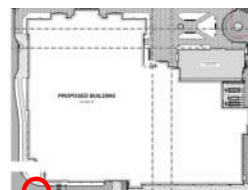




Main Arena West Elevation Exterior Stone Installation



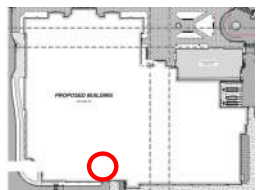
Main Arena South Elevation Exterior Stone Installation



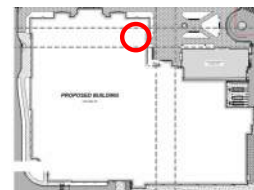




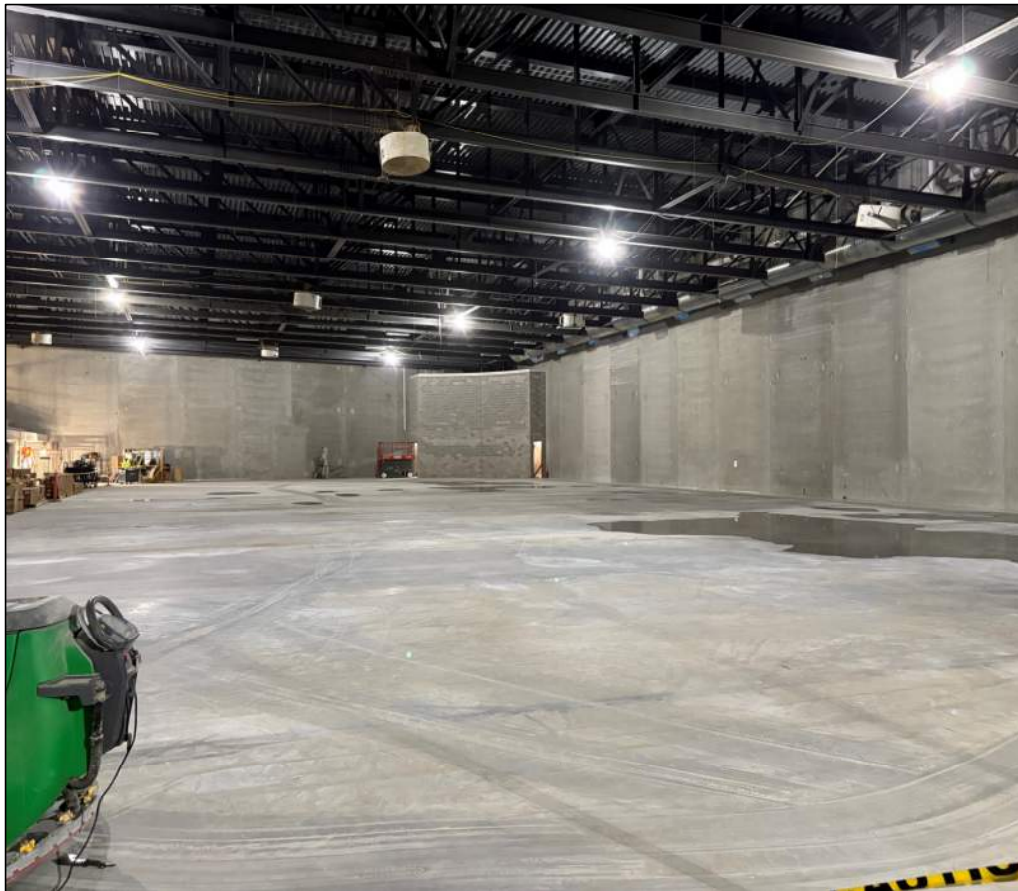
Main Arena South Low Roof Exterior Metal Panel Installation



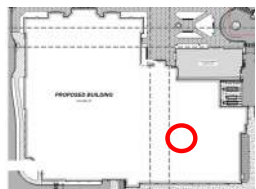
Exterior Sheathing and Metal Panel Installation at Main Arena North Low Roof



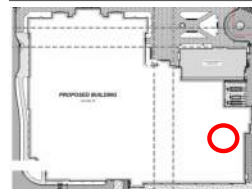




Auxiliary Ice Slab Pour Complete

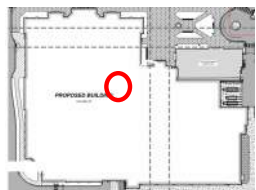


Auxiliary Ice Slab Pour Complete

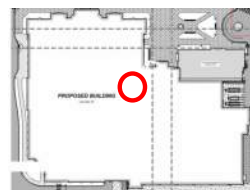




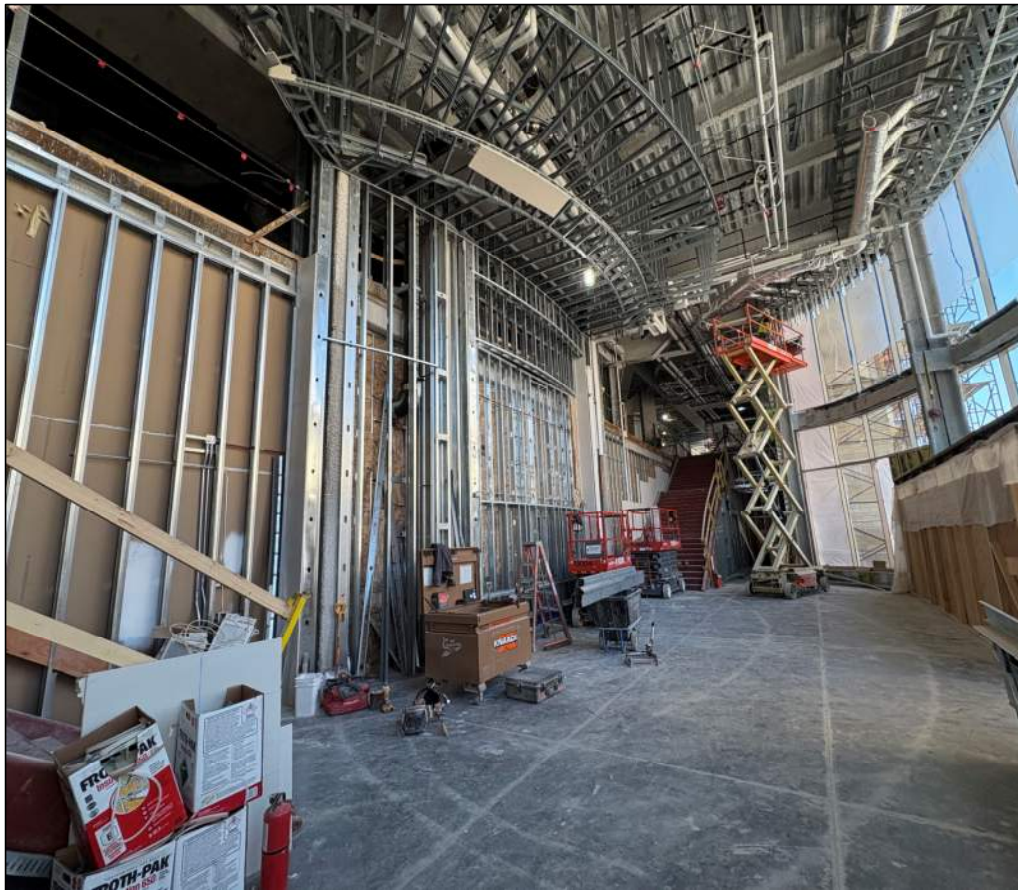
Main Arena Event Level Hockey Locker Room



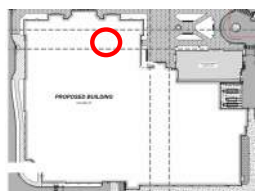
Main Arena Event Level Hockey Locker Room



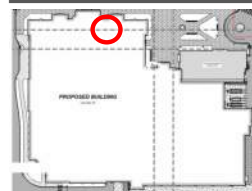




Main Arena Entrance

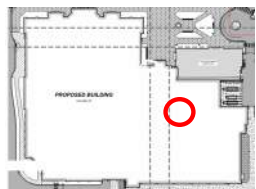


Main Arena Bowl Construction Progression

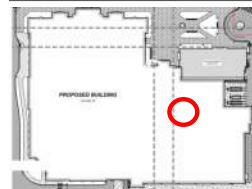




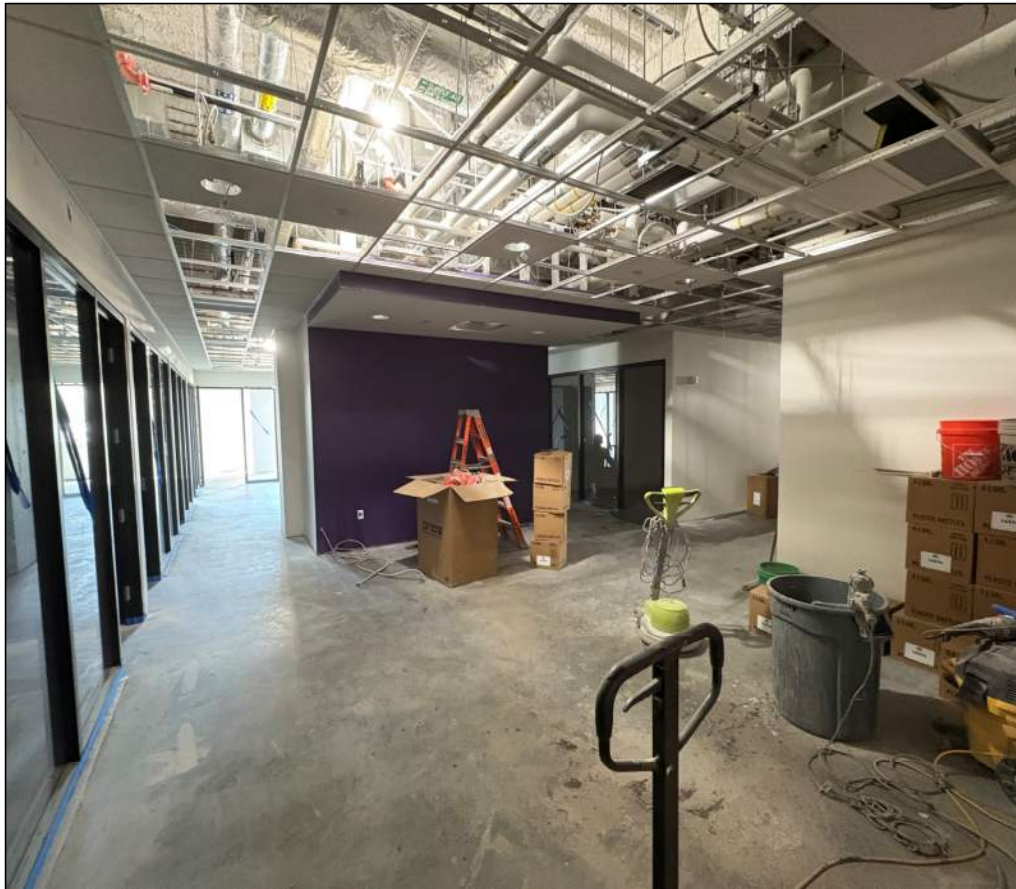
Men's Practice Basketball Court



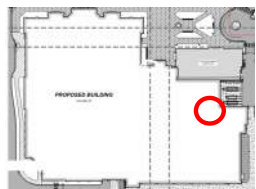
Men's Practice Basketball Court



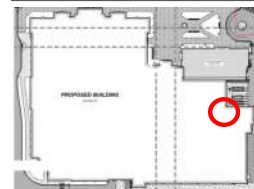


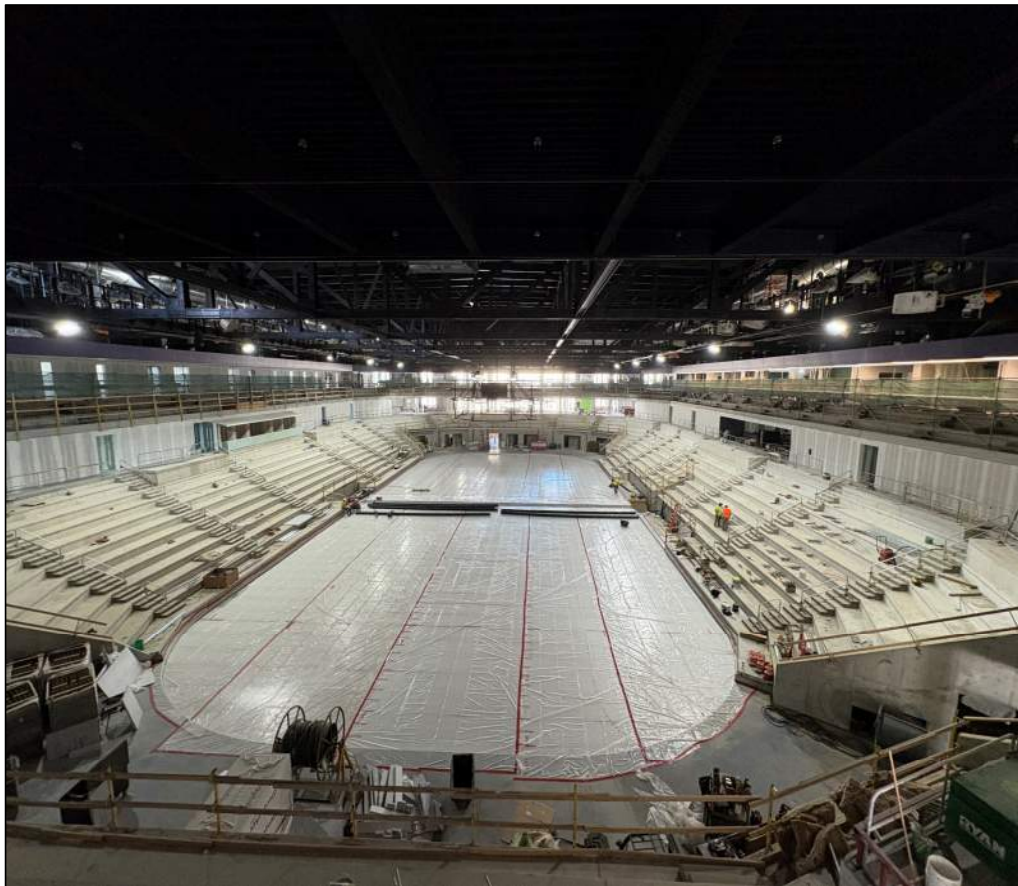


Interior Finishes at Soccer/Softball Shared Spaces

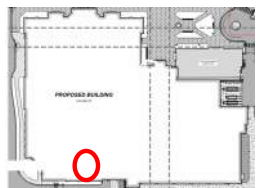


Interior Finishes at Soccer/Softball Shared Spaces

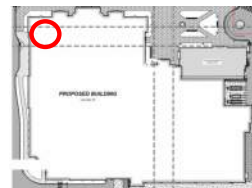




Main Arena Club Level Main Bowl Construction Progression



Main Arena Capital Club Construction Progression



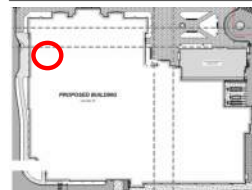




Main Arena Club Level Soffit Framing

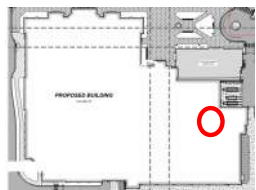


Main Arena Club Level Soffit Framing

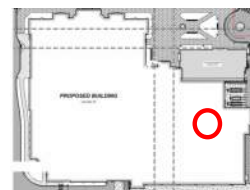




Interior Finishes at Soccer Locker Room



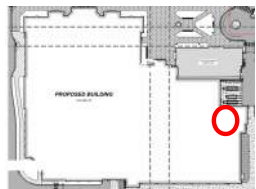
Interior Finishes at Soccer Player Lounge



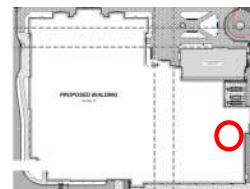




Interior Finishes at Softball Locker Room



Interior Finishes at Softball Player Lounge





ALL FOR THE COMMON GOOD