



## Monthly Update

December 2024

## *Lee and Penny Anderson Arena*

*University of St. Thomas, St. Paul, MN*



## Executive Summary

Ryan Companies with the help of our trade partners worked through the following events within the month of December.

- Horwitz and Total Mechanical continued work on piping and mechanical rough-ins in the Main Arena and Auxiliary Ice Rink.
- Gephart has begun in wall electrical rough-ins at the Event level and Concourse level in the Auxiliary Ice Arena.
- Danny's completed the primary structural steel erection and we hosted a topping-out event in the month of December.
- Gresser is continuing to erect interior CMU walls at the Main Arena and continue exterior stone installations at the east, north, and west elevations of the Main Arena.
- Wells continues caulking previously set precast and stadia in both the Main Arena and Auxiliary Ice Rink.
- Ryan Self Perform completed slab-on-grade pours at the Auxiliary Ice Rink and completed all slab-on-metal-deck pours at the Main Arena and Auxiliary Ice Arena.
- Metro Manufacturing continues erecting miscellaneous metals at the southwest stair towers and has begun setting the grand stairs at the main lobby.
- Viking continues installing overhead sprinkler piping at the Main Arena.
- Custom Drywall continues exterior framing and sheathing of the Main Arena while continuing to fireproof structural steel at the Club and Upper level.
- Central Roofing continues waterproofing the west and south elevations of the Main Arena, completed roofing at the Auxiliary Ice Arena, and is continuing to roof the high roof at the Main Arena.



## Key Highlights

### UPCOMING EVENTS/MILESTONES

- *Interior masonry erection at the Main Arena to continue*
- *Exterior framing and sheathing to continue*
- *Exterior glazing to begin*
- *Roofing to continue at the high roof of the Main Arena*
- *Continue interior cold-formed metal framing of practice facilities*
- *Complete precast stadia erection at the Main Arena*
- *Interior painting to begin*

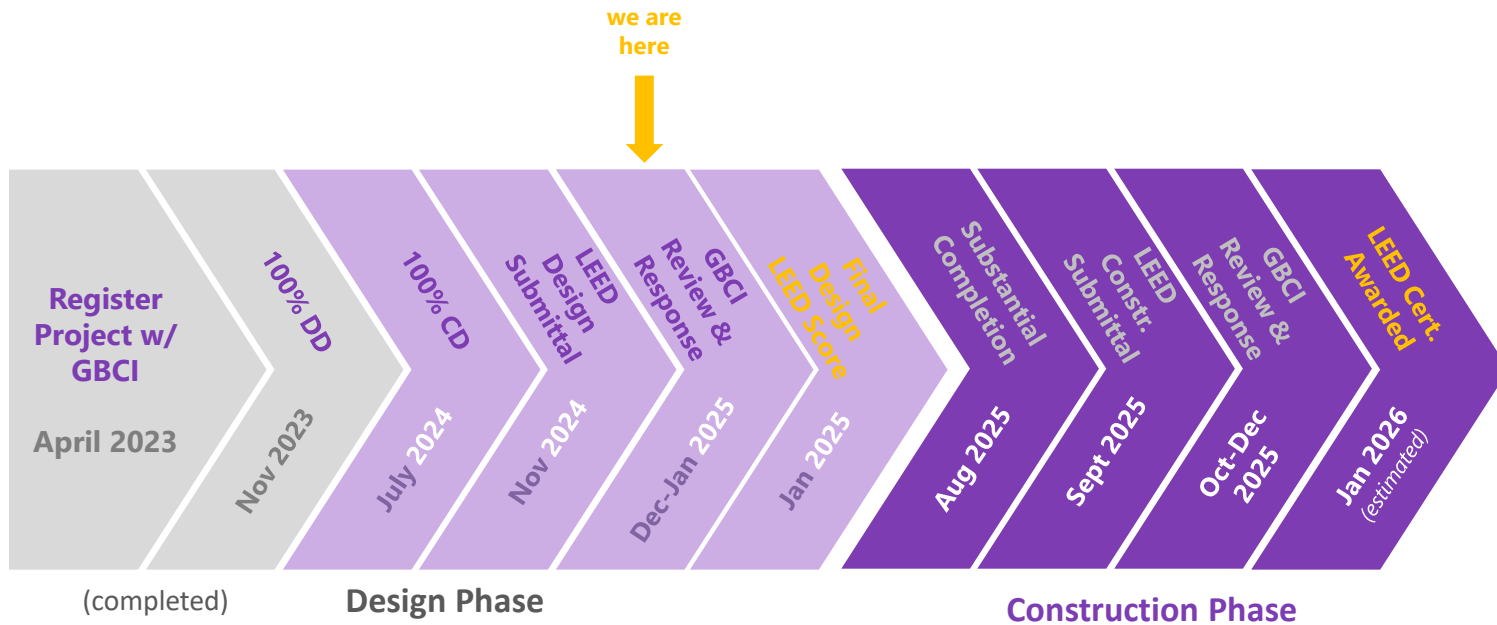


## LEED – Construction Waste Diversion

Month	Waste Hauler	Waste Type	Total Weight (Tons)	Diversion Weight (Tons)	Weight To Landfill (Tons)	Diversion Rate (%)
February	Dem-Con	Mixed	20.96	15.78	5.18	75.3%
March	Dem-Con	Mixed	11.42	8.6	2.82	75.3%
April	Dem-Con	Mixed	9.74	7.33	2.41	75.3%
May	Dem-Con	Mixed	31.24	23.54	7.7	75.4%
June	Dem-Con	Mixed	22.880	17.23	5.65	75.3%
July	Dem-Con	Mixed	103.17	77.69	25.48	75.3%
August	Dem-Con	Mixed	131.05	98.72	32.33	75.3%
September	Dem-Con	Mixed	75.45	58.22	17.23	77.2%
October	Dem-Con	Mixed	99.92	74.88	25.04	74.90%
November	Dem-Con	Mixed	80.25	59.14	21.11	73.7%
		<b>Grand Total</b>	<b>586.08</b>	<b>441.13</b>	<b>144.95</b>	<b>75.3%</b>



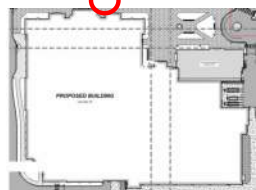
# Sustainability – Timeline



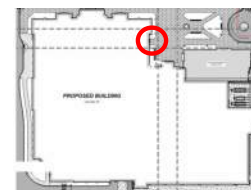




Main Arena North Exterior Elevation Framing and Sheathing

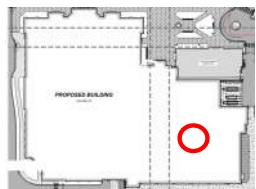


Vetter Stone and Cast Stone Installation Northeast Corner

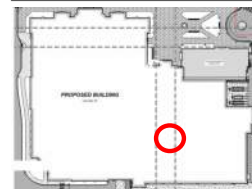




Roofing Installation at Auxiliary Ice



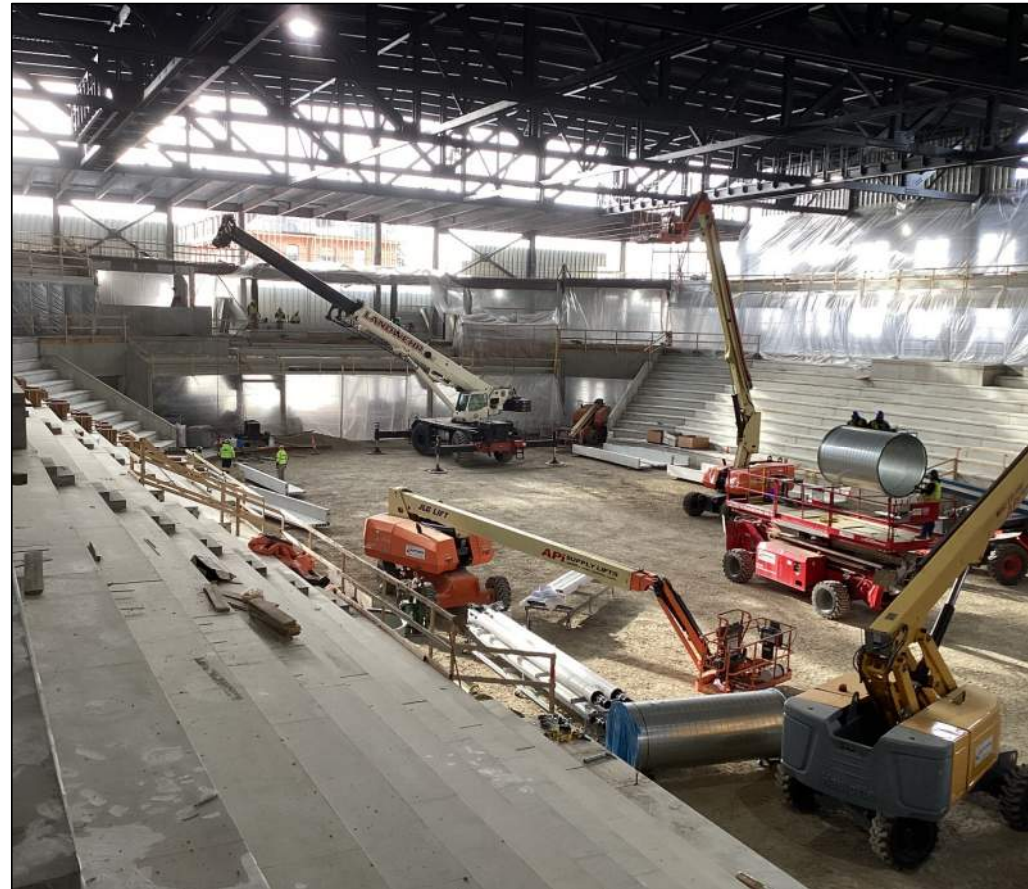
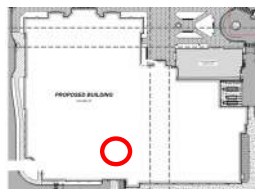
Auxiliary Ice Rink Slab on Grade Pour and Cast In Place Steps Pour



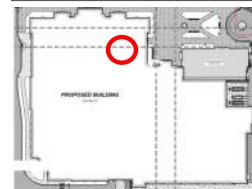




Main Arena Bowl HVAC Installation



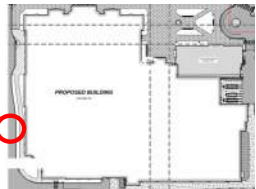
Main Arena Bowl Stadia Installation



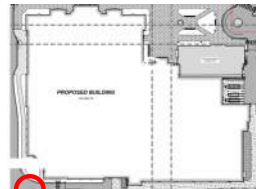




Exterior Framing, Roof Decking, Sheathing and Weather Barrier Installation - West

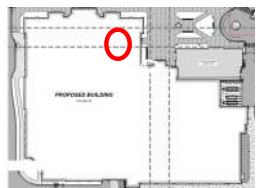


Exterior Sheathing and Roof Decking - South

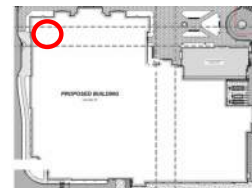




Interior Framing Northeast Concourse Level



Sprinkler Rough-ins Northwest Concourse Level



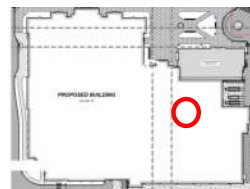




Roofing Installation at Main Arena High Roof



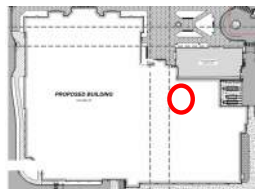
Roofing Installation at Main Arena High Roof



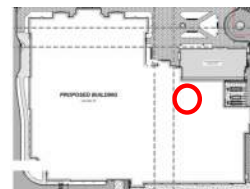




Interior MEP Rough-ins and Framing at Soccer Players Lounge



Interior Gyp Framing at Soccer Corridor





ALL FOR THE COMMON GOOD